

# Socio Complexity

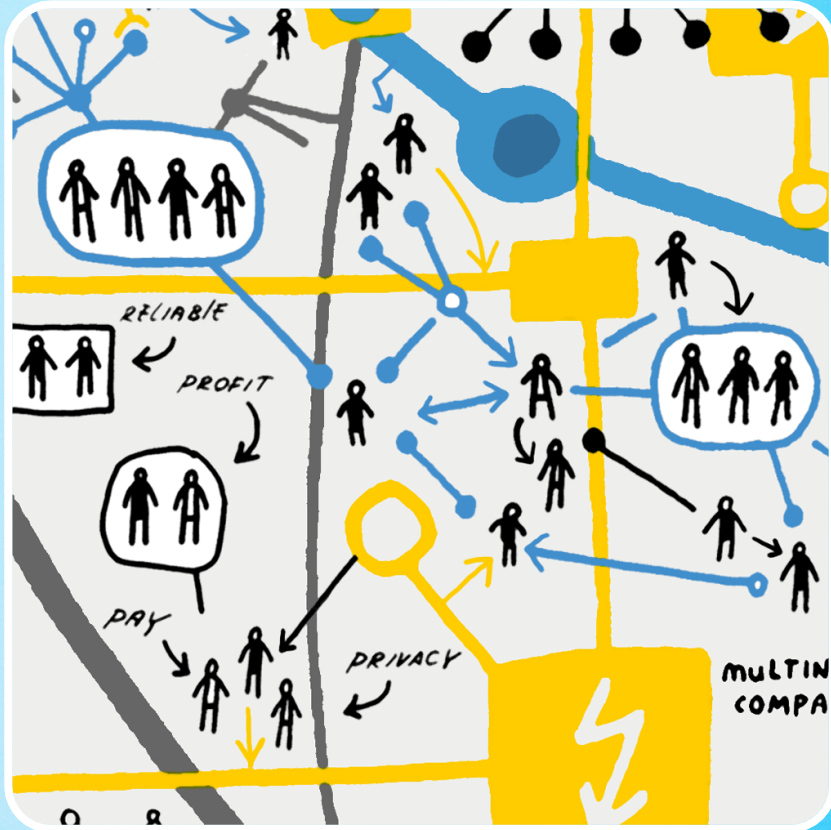
## *Part 2*



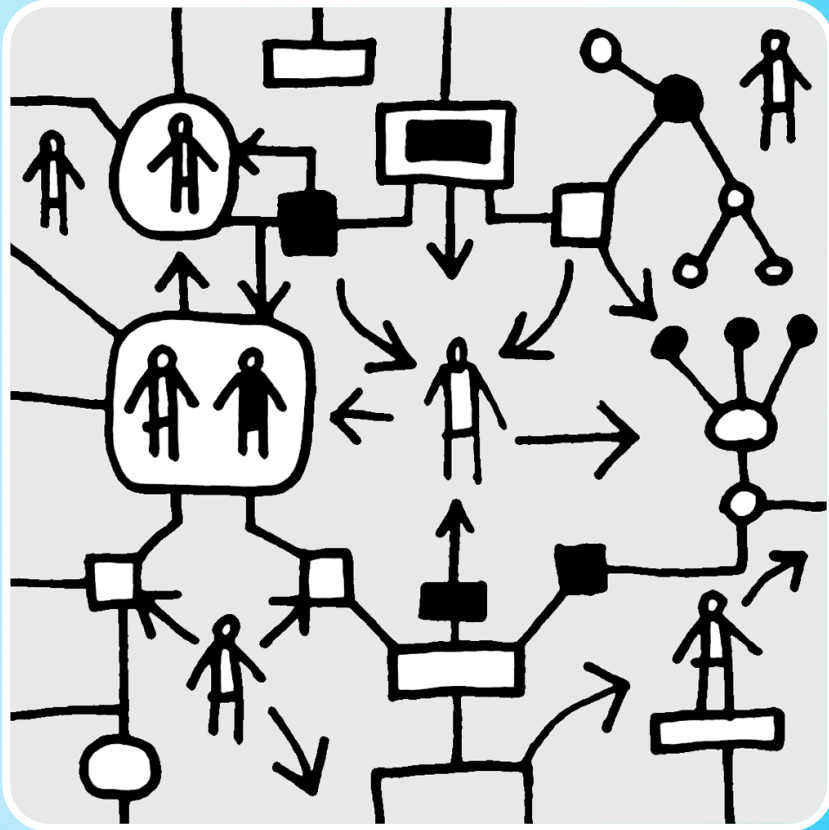
**Prof. Ernst ten Heuvelhof**

Professor, Faculty of TPM, TU Delft

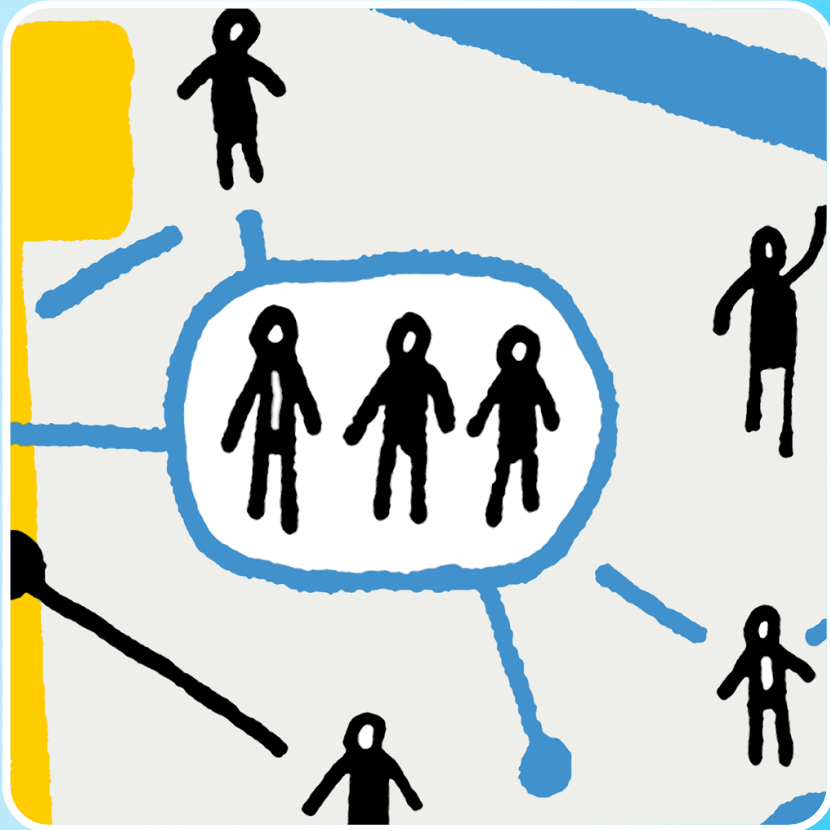
# Complexity



# Complex interactions



# Actors influence each other



# Companies: new services



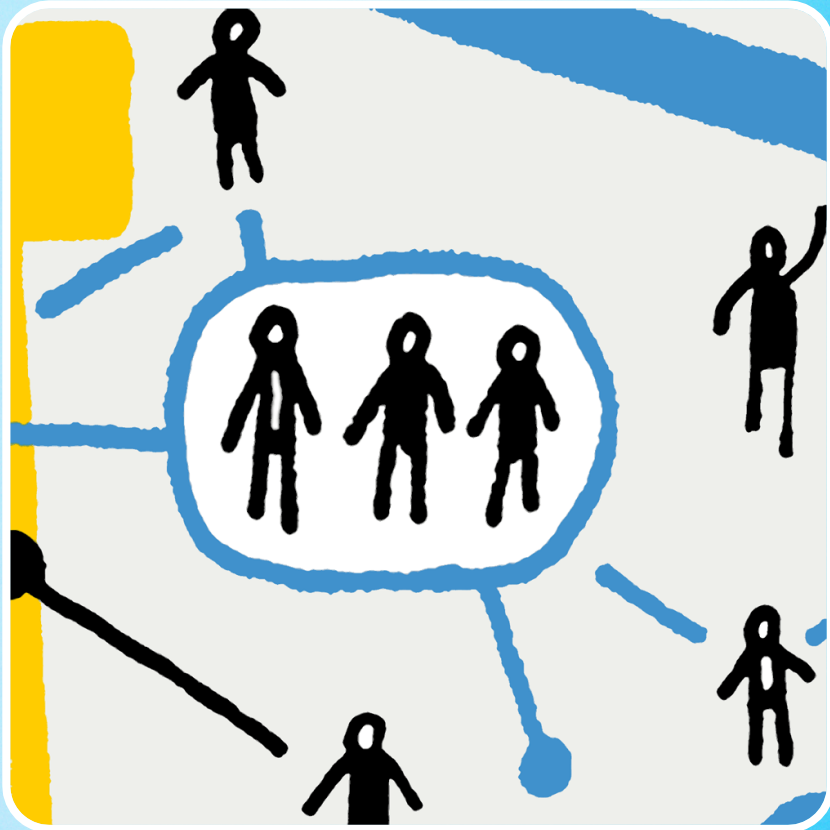
# Abundance of actions



# Strategic behavior: Companies



# Strategic behavior: Government

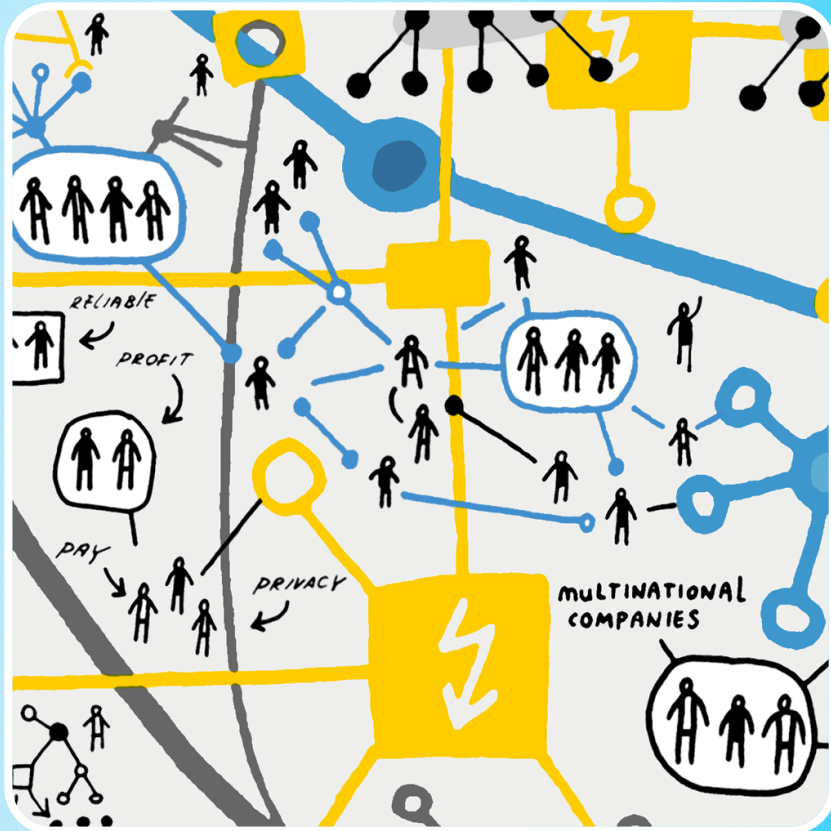




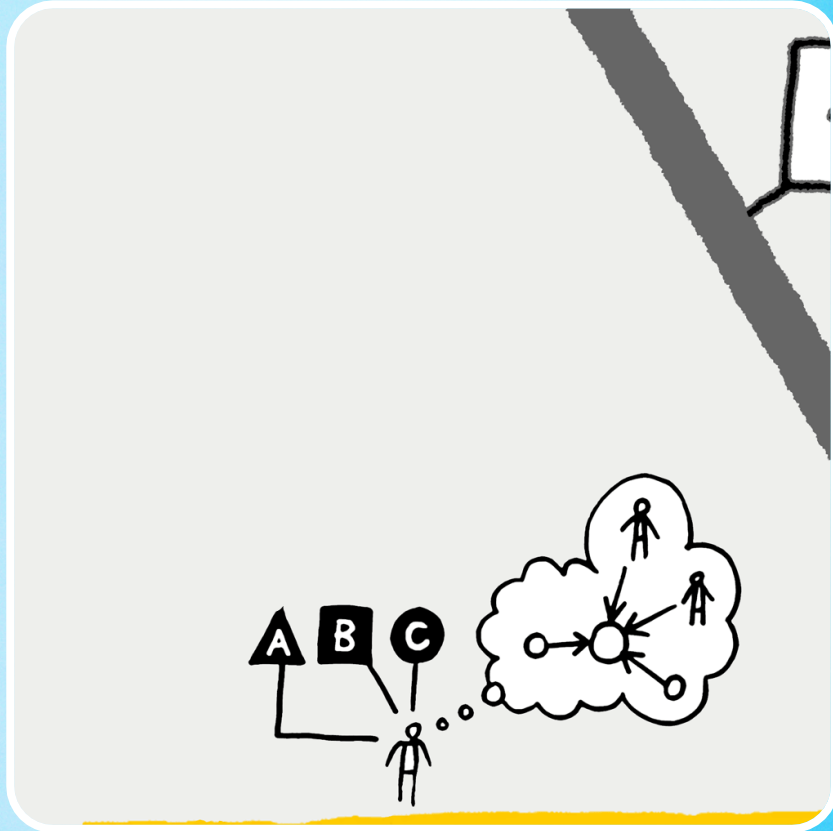
# Strategic behavior: End Users



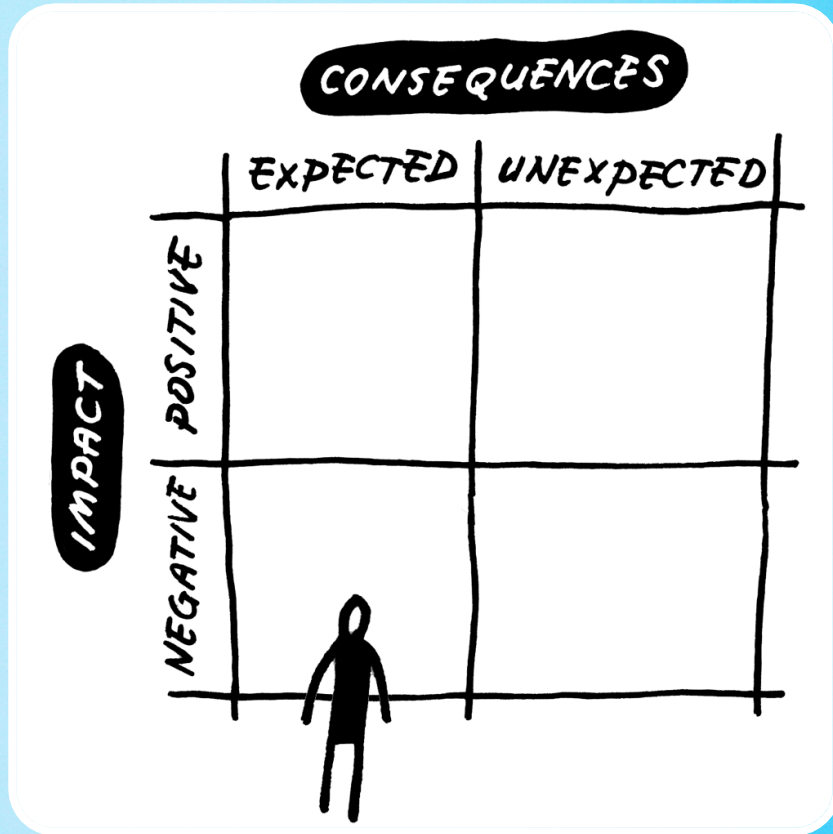
# Dynamics



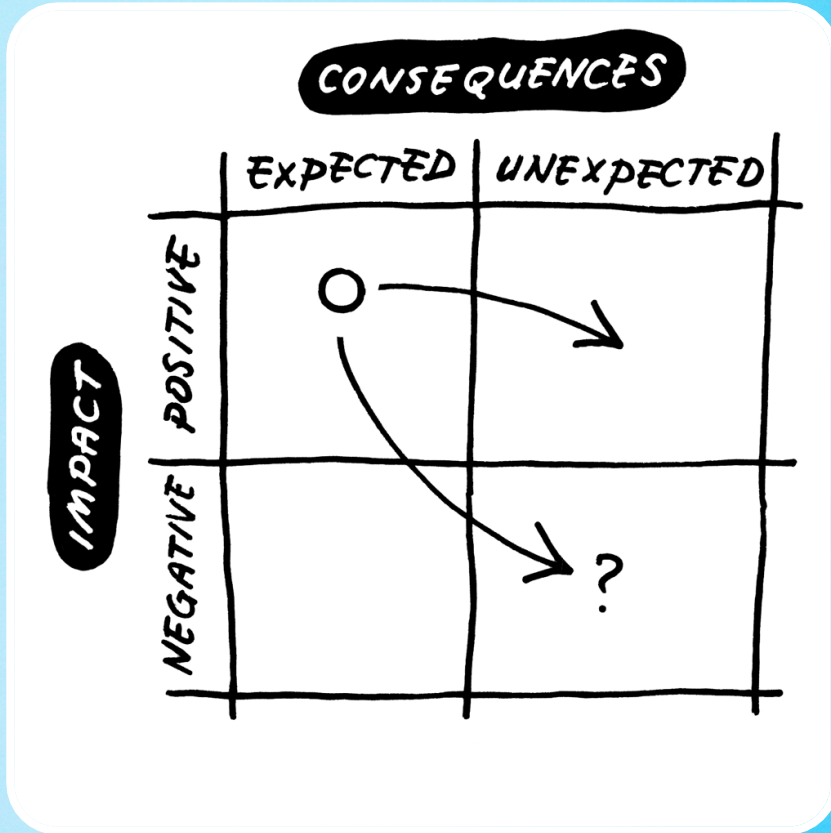
# Decision making



# Decision making is dynamic



# Decision making is dynamic



# Unpredictability!



# Thank you for your attention!

Please post any questions you may have  
on our discussion forum